

CARPOOL SAFETY REMINDERS

INSTRUCTION BEGINS: 7:45AM
Instruction ends at 3:17 p.m.

All staff are trained to keep students safe at all times and they work hard at doing so. As the school year goes by, there is a tendency to get complacent with carpool expectations and, as drivers, to forget some very important procedures we have in place. Please keep the information below in mind as you participate in carpool.

Thank you for your cooperation as we keep everyone's safety our top priority.

HME



HARRY MCKILLOP
ELEMENTARY

#HMEproud

3509 Liberty Way
Melissa, TX 75454



Stay Off Your Cell Phone
It's the law. Stay alert.



Watch Your Speed
School zones are in place to keep everyone safe.



Be Patient & Courteous
Respect one another. Be a role model for our students.



Rainy Day Carpool
Walkers are not dismissed if severe weather is present.



Use Designated Areas
Only drop off and pick up your child in our designated spots.



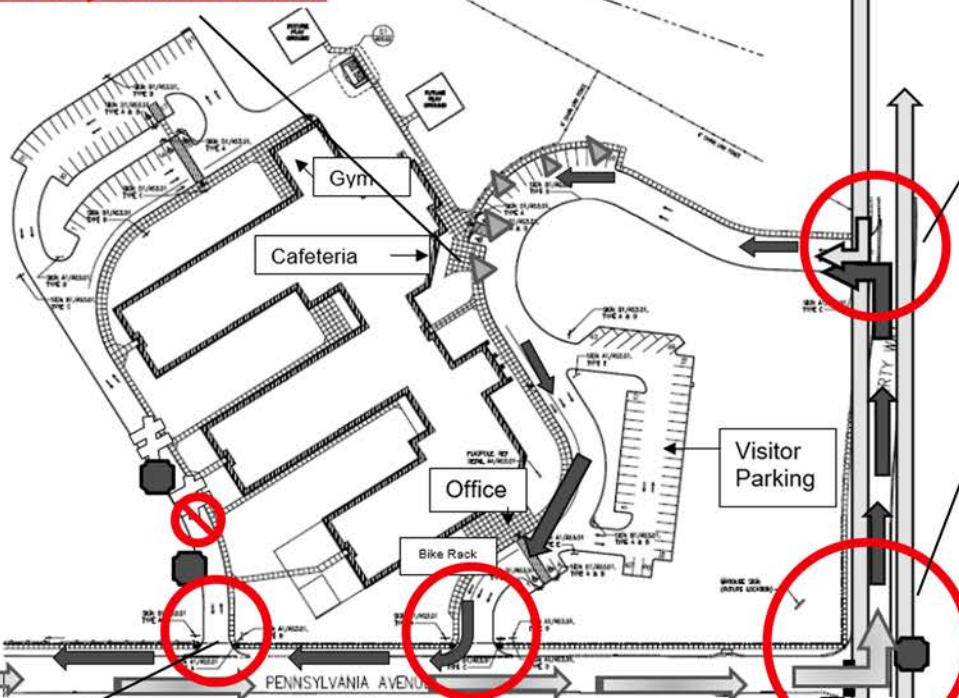
Yield to Pedestrians
Children may not always remember to look both ways.



Kindness & Etiquette
Please be respectful to staff, volunteers, and neighbors.

TIP: Drop off from 7:00 - 7:15 a.m. to avoid morning congestion.

Pull all the way to the first cone.



Do not drop off students across the street from the carpool entrance.

PENN. & LIBERTY:

Students must use the **designated crosswalk area** at the stop signs.

When there is a crossing guard on duty, please follow their lead.

Cars in the right lane on Liberty, going North toward the carpool entrance, **should not turn left onto Pennsylvania.** Please go straight past the school and u-turn.

There is now a crossing guard at the portable entrance.

Authorized/staff vehicles only.

EXITING CARPOOL:

No left-turn when exiting carpool from 7:00 - 8:00 a.m. and 2:30 - 3:30 p.m.